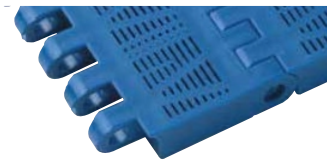




SP-OPB (STRAIGHT RUNNING)



Flat top



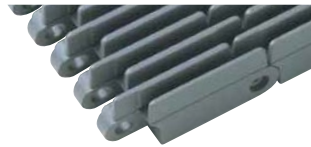
Flush grid 18 % open



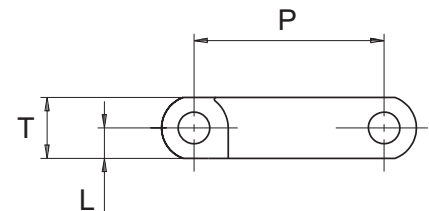
Flush grid 23 % open



Flush grid 36 % open



Flush grid 36 % Rib
color ● ●
*finger plates available



ACCESSORIES



Cleat height - 1.25", 2", 3"
without support ribs



Cleat height - 2", 3", 4"
with support ribs



Side guard - 3"

Description	mm	inch
Pitch (P)	50	1.97
L	8	0.31
T	16	0.63
Backflex radius	75	3
Rod (Ø)	8	0.31
Surface type	Flat/open	
Color	○ ●	
Material	PP / POM	
Curve	No	

SP-OPB (SPROCKET)

Teeth (Z)	Pcd (mm)	B	M/C		M/D	
			S	W	S	W
6	100.3	35.5	★	40		
8	131.1	52.6	★	40	■ 40 ● 25	32
10	162.4	69.2	★	40	■ 40 ● 25	32
12	193.9	85.7	★	40	■ 40 ● 25	32
16	257.3	118.2	★	40		

* Type of bore : ★ - round & square, ■ - square, ● - round

* A - minimal distance 53.3 mm (2.1")

* For material availability contact our sales team

* M/C - Machined solid, M/D - Moulded solid, S - Availability, W - Sprocket Width

